

HOUSE OF

FULL BODY TILES

600x600mm | 600x1200mm

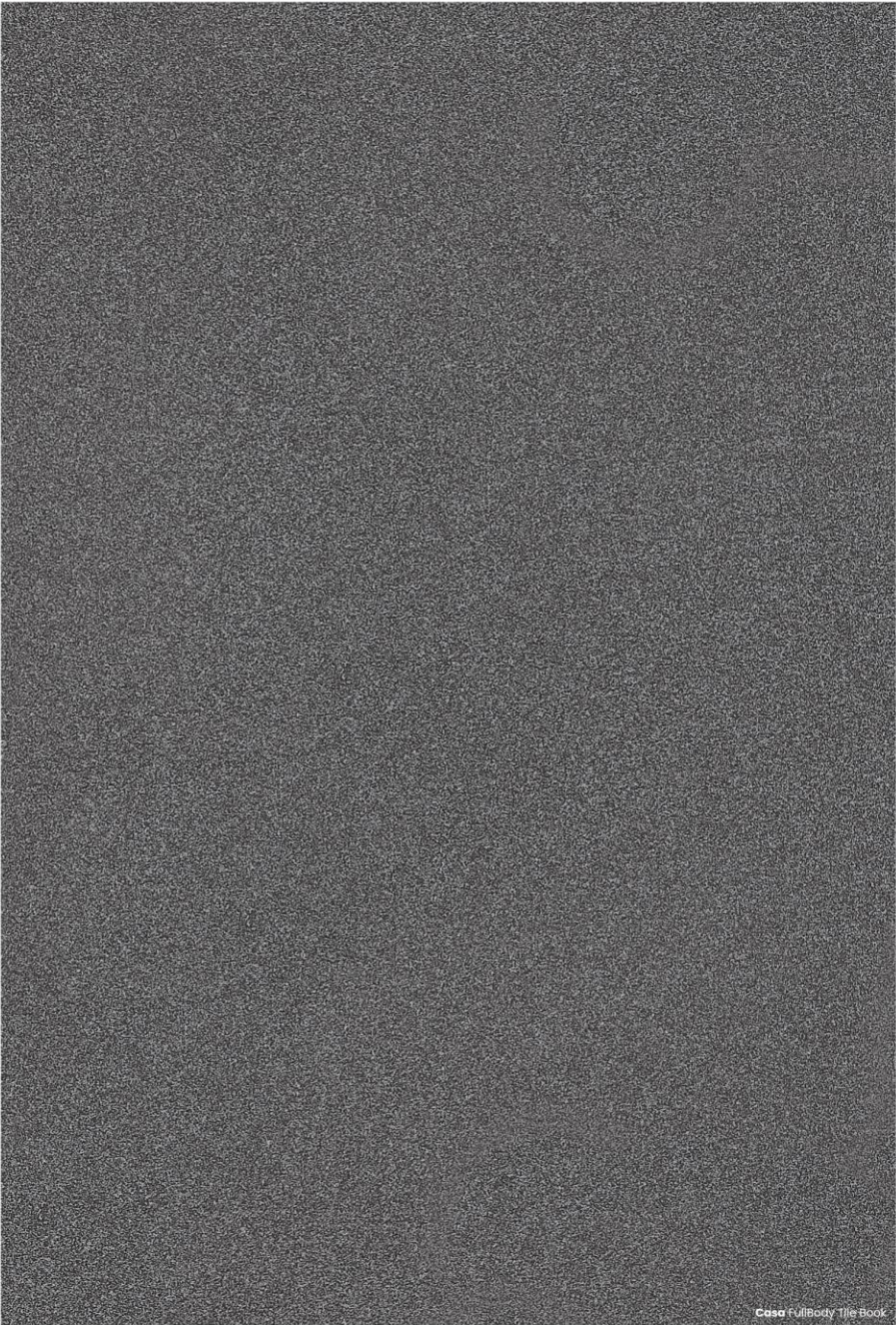
Full Body Tile Book 2022

Catalog

ORELIA
GROUP

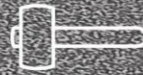
Table of contents

	New Colors On Demand
	38
Concept	
05	
Full Body	Installation System
06	63
Unique Features	Certification
07	69
Sizes & Surface	Technical Specification
08	70
Works	Tile Cleaning
09	70
Application	Installation Video
10	71
User Guide	
11	
Hybrid + Technology	
12	
Meta Surface	
13	
Collective Creation	
14	
Product Range	
15	
Style Index & Category	
16	





**HERITAGE,
ART,
INNOVATIVE,
DESIGN.**



Solid



Safe,
Clean,
fireproof



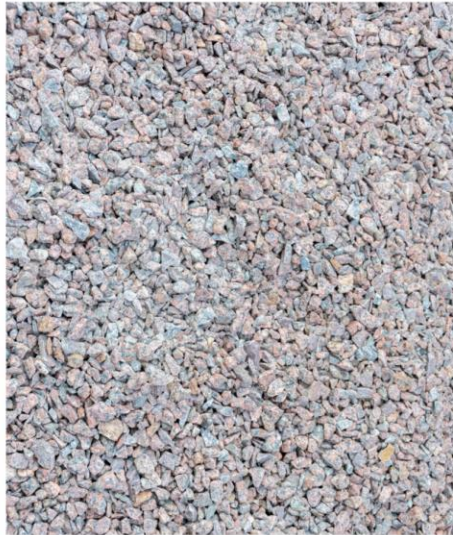
Highly
sustainable

STRONG HOMOGENEOUS FULL BODY

A material that is homogeneous throughout. A solid material which makes no distinction between outer surface and core, made with interpenetrating mixes of different colors.

FULLBODY UNIQUE FEATURES

ORELIA
GROUP



A

Only minerals

Only natural raw materials and minerals. Not a reproduction, but a full-body authentic material.

B

Multicolor Chips and Grains

An unrivalled variety of coloured slivers and grains, obtained exclusively from natural raw materials.

C

True Random Effect

Each tile is unique, and no two are ever the same. An attractive, random blend of multi-coloured slivers and grains.

D

Highest pressure and fire.

A uniform body, indestructible and non-absorbent. Compacted at extremely high pressure and baked at 1200° C.



SURFACE

← Smooth Polished

Soft →

Soft + META SURFACES

Antibacterial, Antiviral,
Hybrid+ Technology

Structured →

SIZES :

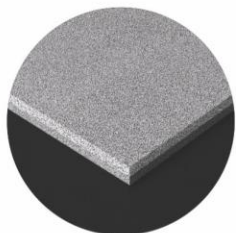
600x
1200mm

9MM
THICKNESS

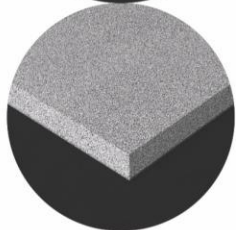
600x
600mm

WORKS

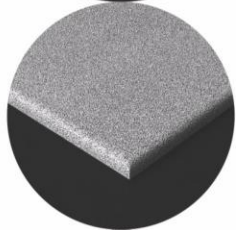
Process with
visible thickness.



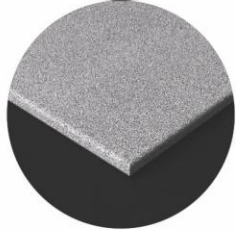
Squared straight edge.



Squared 45° edge



Bullnose



Rounded double straight edge



Applications



RESIDENTIAL



GARDEN & POOL



HOTELS



OFFICE



RESTAURANT



SHOPS



MALLS



PUBLIC SPACES



AIRPORTS

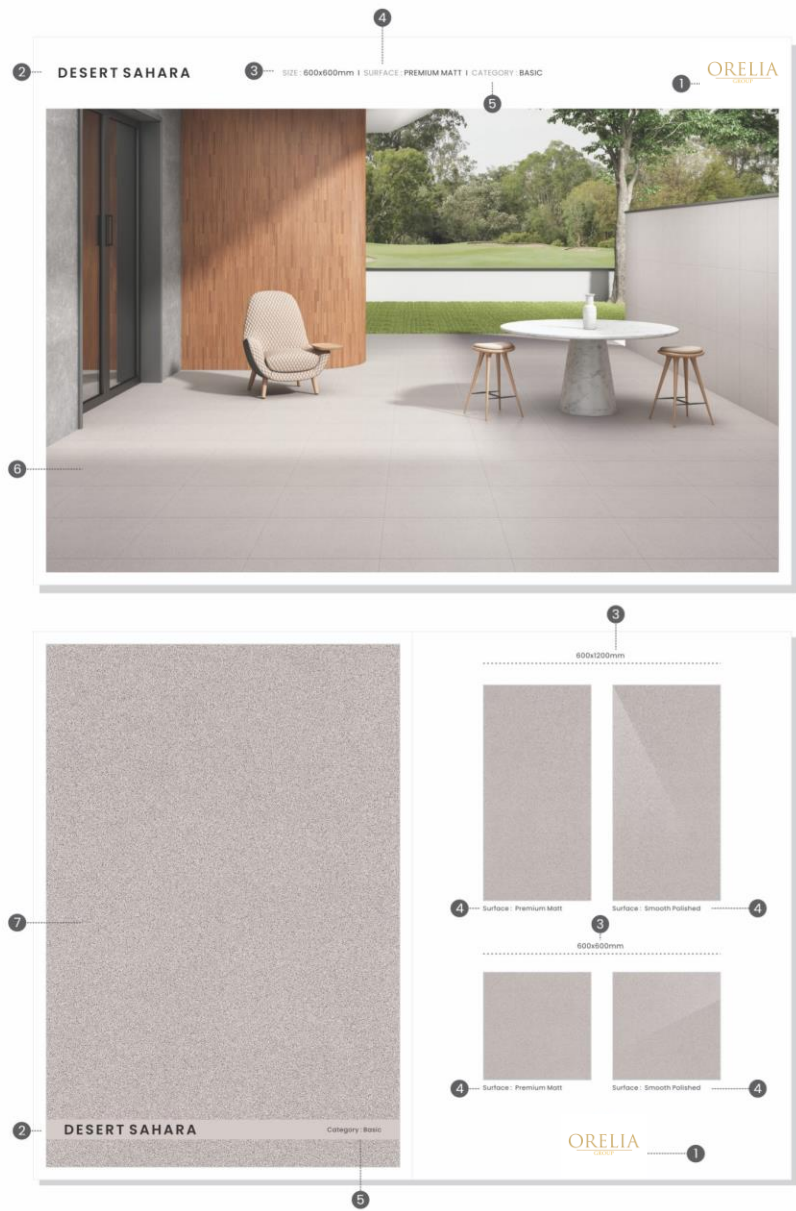


TRAIN STATION

is
the technical solution
for every design situation
whether indoor or
outdoor

FULL BODY

USER GUIDE



Product type

Full Body Technical Porcelain Stoneware

A product of the most advanced innovation and technology, this Full Body is completely vitrified and Homogeneous through its mass. Versatile in its aesthetics and performance, this product offers finest superior properties in resistance and hygiene.

- 1 Collection name
- 2 Design name
- 3 Available size
- 4 Surface
- 5 Category
- 6 Product Imagination
- 7 Product Image

Types of application



Characteristics

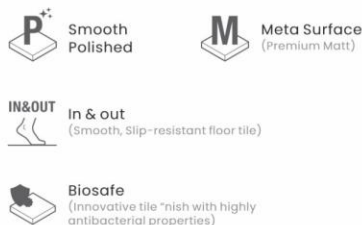


Recycled content



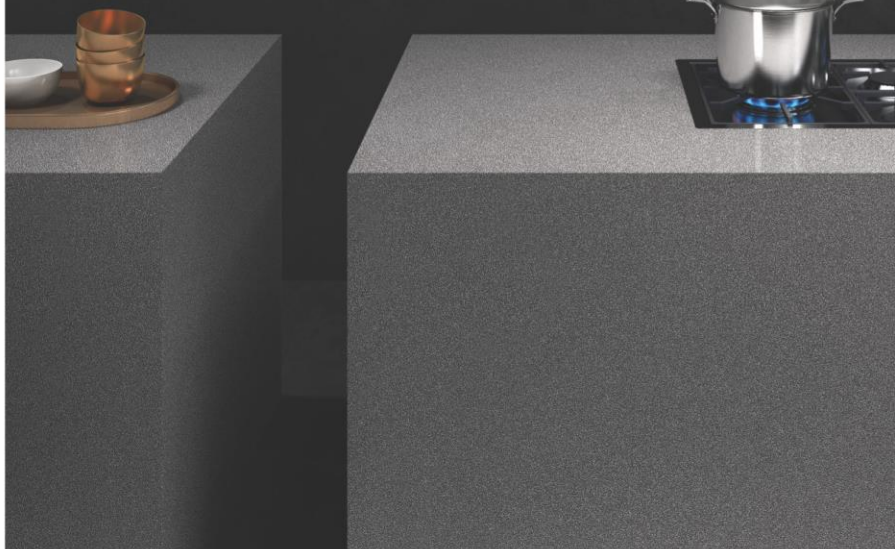
Made with a minimum of 70% recycled pre-consumer material, rejected technical tiles and may contribute to obtain GREEN Sustainability.

Finish



HYBRID+
TECHNOLOGY

**FULL BODY
SKID RESISTANT
GERM FREE**



Protect
ANTIBATTERICO - ANTIMICROBIAL

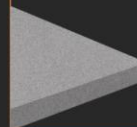
**No Germs & Fungus, Less Health Issues | Get Rid of the Odours
Various Applications | Improves Quality of Life**

Collections comes with protect antibacterial hybrid+ technology. These Vitrified matt tiles is an innovative product made from finest ingredients with anti microbial treatment that inhibits growth of germs like bacteria and fungus.

This full body product with skid resistant property can be safely used in hospitals, schools, residential areas, offices or any other commercial spaces, where longevity and hygiene is paramount.

FULL BODY

These tiles are ideal for zones with heavy footfall because even after extended use, their colour remains the same.



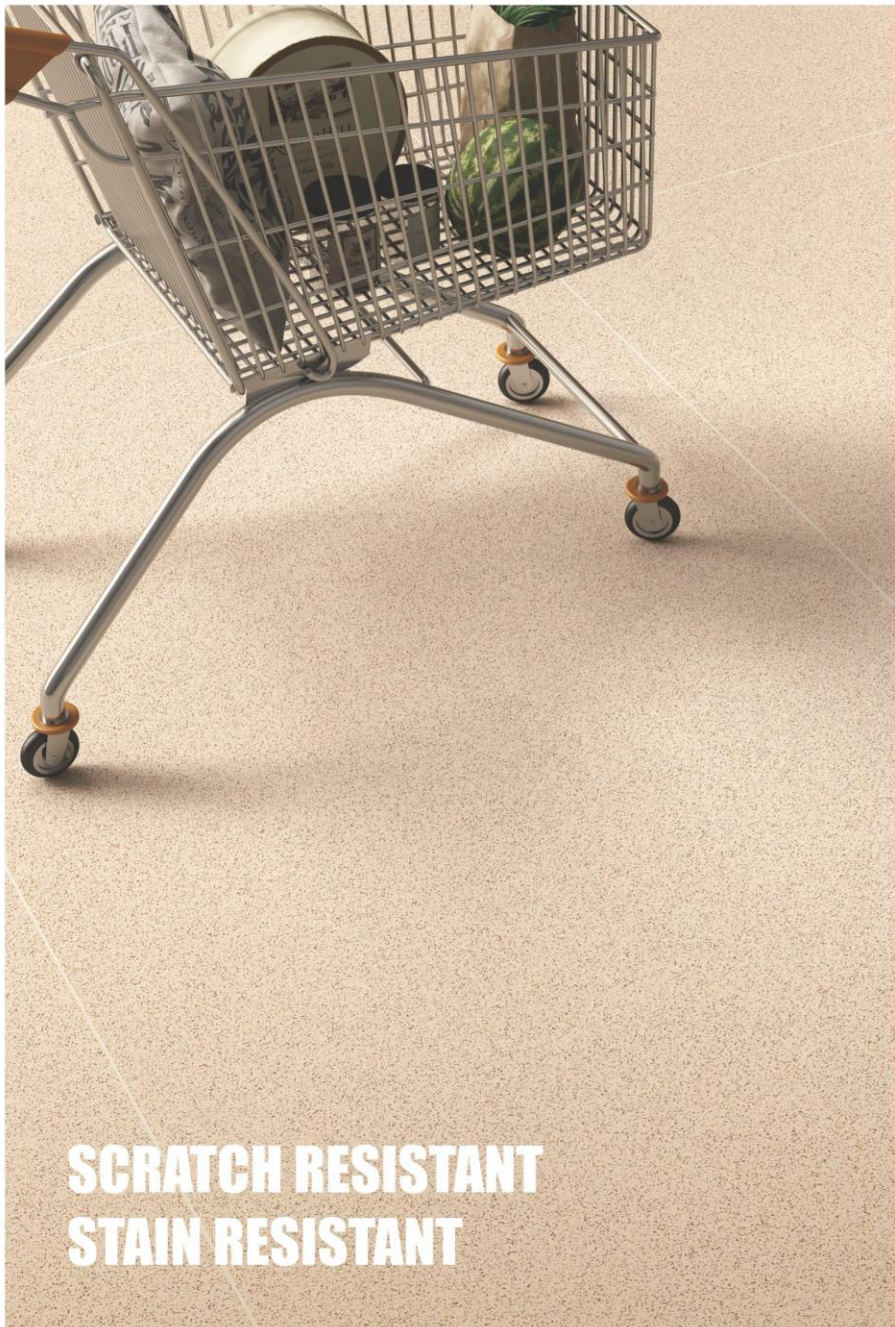
SKID RESISTANT

A versatile surface with skid resistant property makes these tiles perfect for zero slippage on slopes of upto 25°.



GERM FREE (99.9%)

A specially formulated anti-microbial application used during the manufacturing process enables these tiles to prevent habitation of germs like bacteria and fungus, making them an ideal choice for today's health-conscious consumers.



SCRATCH RESISTANT
STAIN RESISTANT



Confidently Smooth, Comfortably Stylish.

As smooth as the breezing wind, 'Meta Surface' is yet another achievement for us. The exceptional surface is achieved with the exclusive and patented Italian technology, which is the first of its kind in India. It takes the surface quality to where no other technology can reach.

With this innovation, we have overcome the myth that smooth surfaces get scratches and stains. Despite having the unmatched smoothness, 'Meta Surface' is resistant to scratches.

HOUSE OF **FULL BODY** VITRIFIED TILES.

Collective Creation

The Full body collection is a grand amalgamation of four categories of tiles which include Casastone, Casa Desert, Casa Terra and Casablanca. Full body tiles are ideal choice for gardens, patios, heavy traffic areas, terraces, Bathrooms, driveways or pool areas. The different installation possibilities allows the material to blend in with its surrounding landscape. With luxury concepts develop in a huge range of finishes, texture, and colors to suit every taste.

Developed using precious natural raw materials and offering premium performance with contemporary style, full body tile is designed to meet the latest architecture and interior designer needs.



600x1200mm



SURFACE : PREMIUM MATT
TYPE : SALT & PEPPER

600x600mm



SURFACE : SMOOTH POLISHED
TYPE : SALT & PEPPER

600x600mm



600x1200mm



Style Index and Category

an extraordinary homogeneous surface that is a unique delight for interiors and architects. The collection gives creative freedom to experiment, play around with their thoughts and ideas in an innovative way.

Our Natural Granite base range of design and colours , offers architects and interiors a rich palette for creating inspired structures that adds luxury and elegance to your space.

full body tiles are characterized by soft solid colours and natural granite base with a surface of premium matt and smooth polished, is available in 60x60cm & 60x120cm size.

Basic

- Desert sahara
- Desert ginger
- Desert granite
- Desert beige
- Desert cemento

Plus

- Desert kota
- Desert lux
- Desert camel
- Desert tobacco

Super Plus

- Desert coal
- Desert gesso
- Desert choco





DESERT CAMEL

SIZE : 600x1200mm | SURFACE : PREMIUM MATT | CATEGORY : PLUS

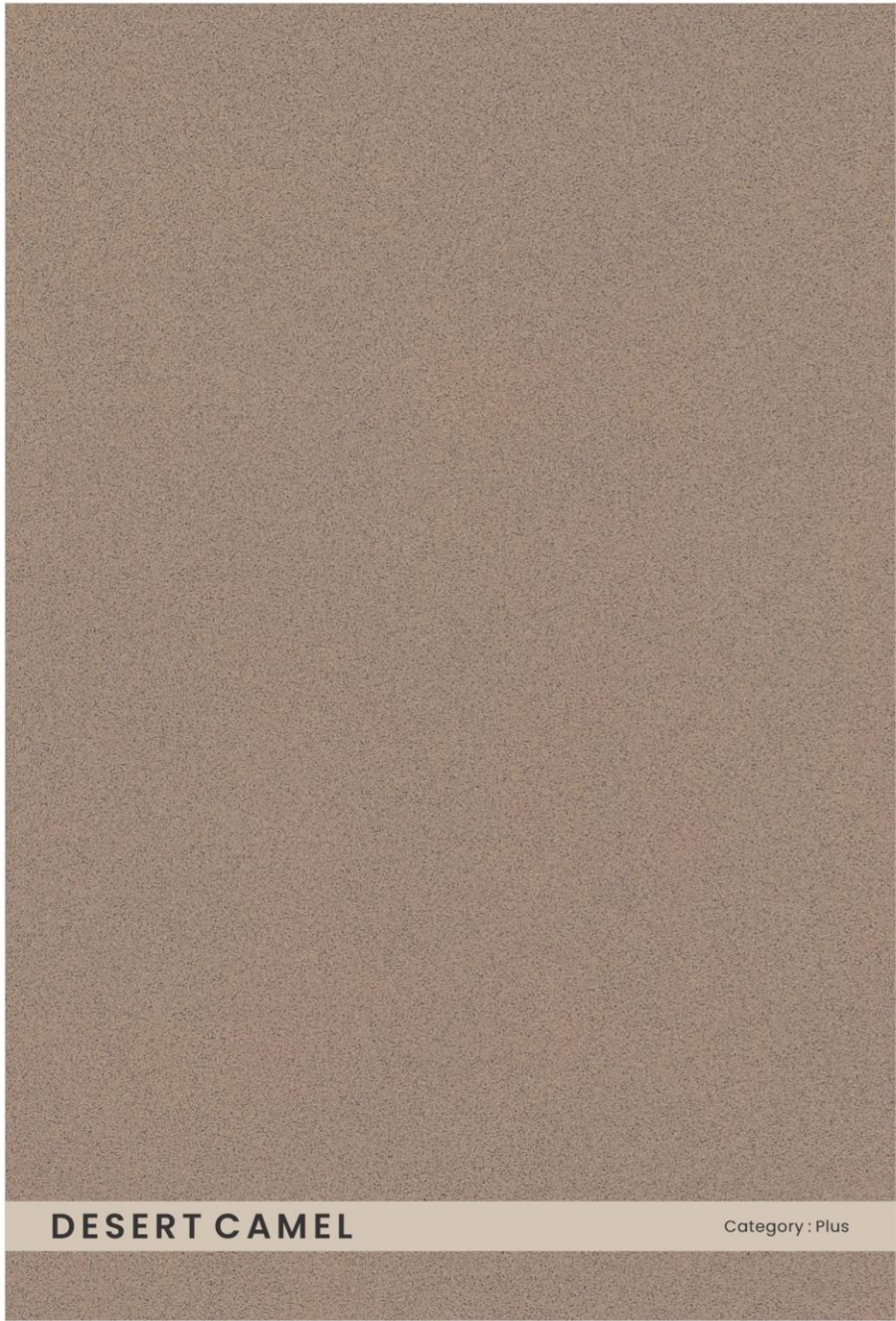
ORELIA
GROUP

DESERT CAMEL

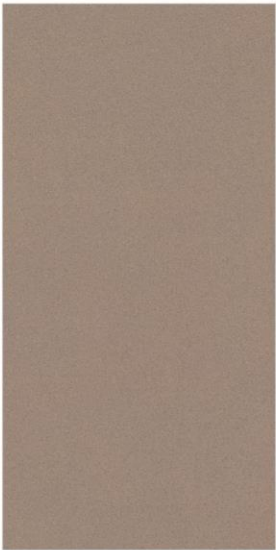
SIZE : 600x1200mm | SURFACE : SMOOTH POLISHED | CATEGORY : PLUS

ORELIA
GROUP





600x1200mm



Surface : Premium Matt



Surface : Smooth Polished



DESERT SAHARA

SIZE : 600x1200mm | SURFACE : PREMIUM MATT | CATEGORY : BASIC

ORELIA
GROUP

SIZE : 600x1200mm | SURFACE : SMOOTH POLISHED | CATEGORY : BASIC



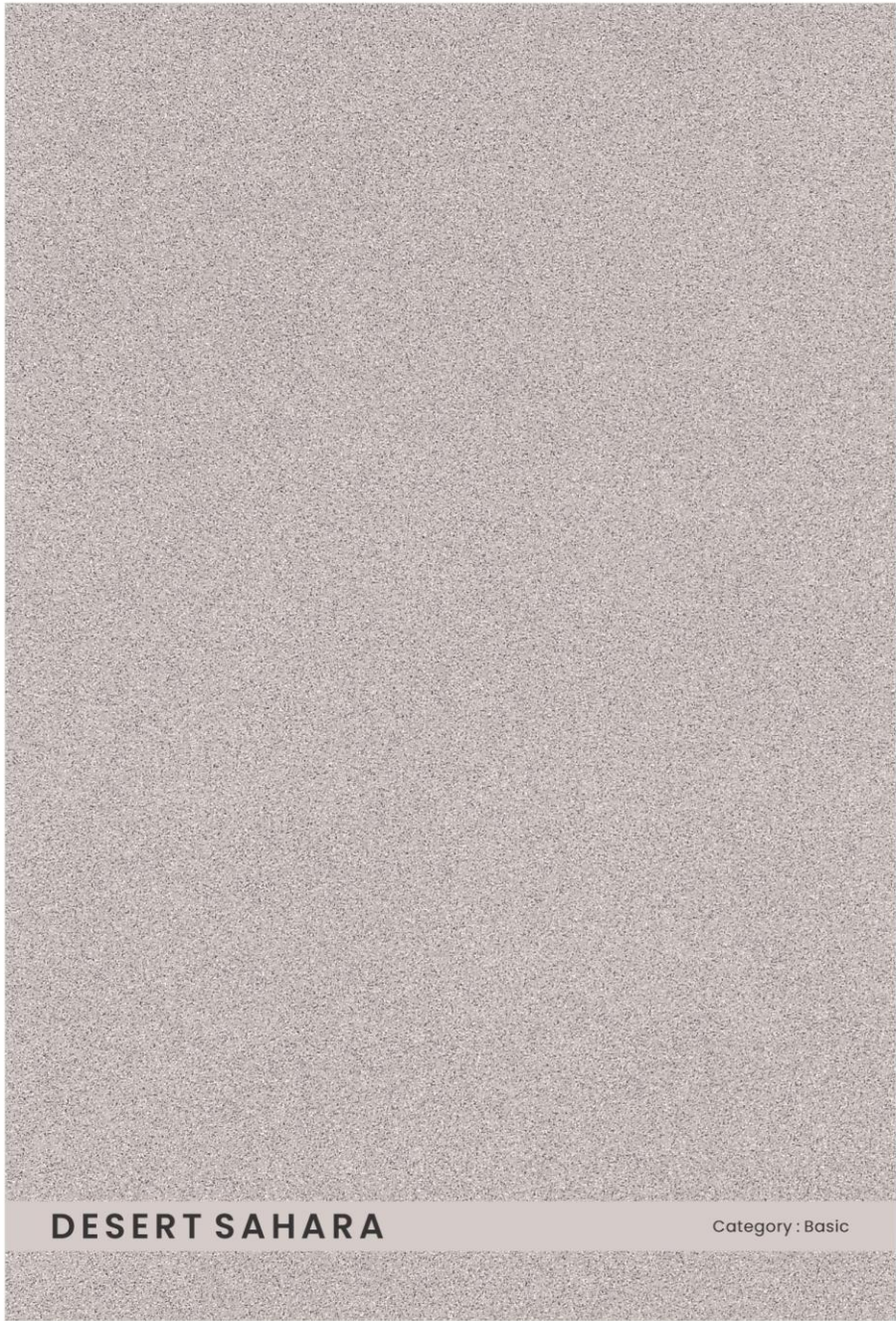
SIZE : 600x600mm | SURFACE : SMOOTH POLISHED | CATEGORY : BASIC

DESERT SAHARA

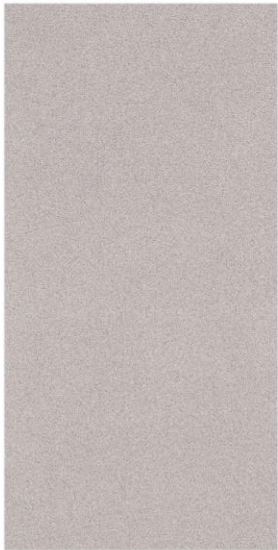
SIZE : 600x600mm | SURFACE : PREMIUM MATT | CATEGORY : BASIC

ORELIA
GROUP





600x1200mm

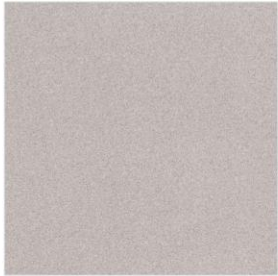


Surface : Premium Matt



Surface : Smooth Polished

600x600mm



Surface : Premium Matt



Surface : Smooth Polished



DESERT CHOCO

SIZE : 600x1200mm | SURFACE : PREMIUM MATT | CATEGORY : SUPER PLUS

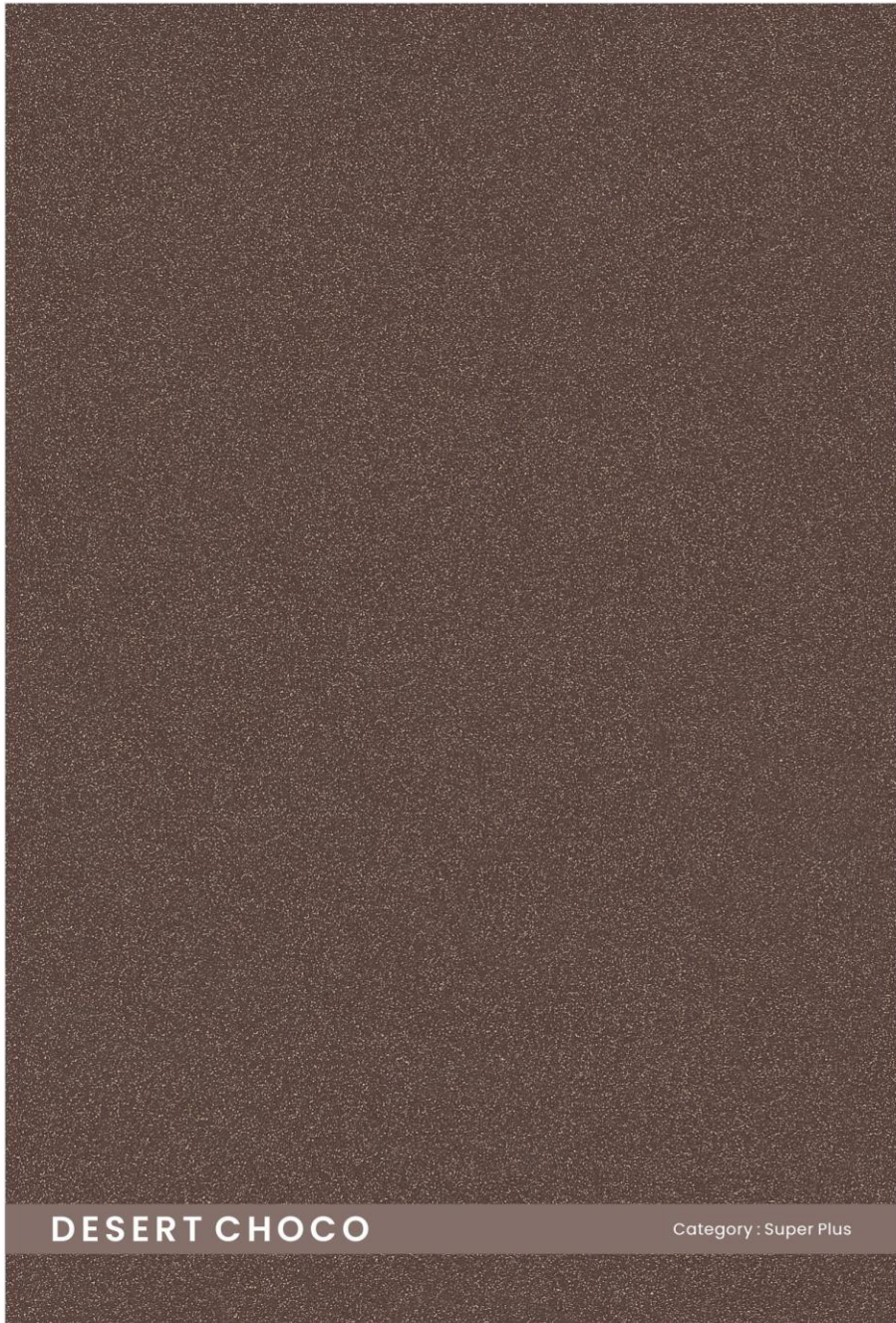
ORELIA
GROUP

DESERT CHOCO

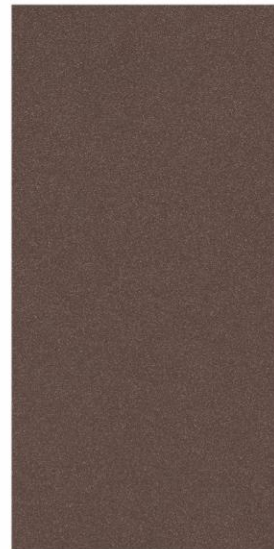
SIZE : 600x1200mm | SURFACE : SMOOTH POLISHED | CATEGORY : SUPER PLUS

ORELIA
GROUP

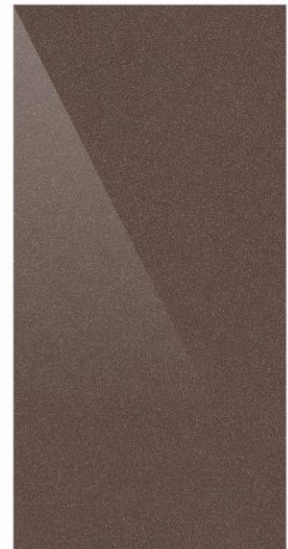




600x1200mm



Surface : Premium Matt



Surface : Smooth Polished

ORELIA
GROUP



DESERT GINGER

SIZE : 600x1200mm | SURFACE : PREMIUM MATT | CATEGORY : BASIC

ORELIA
GROUP

DESERT GINGER

SIZE : 600x1200mm | SURFACE : SMOOTH POLISHED | CATEGORY : BASIC

ORELIA
GROUP

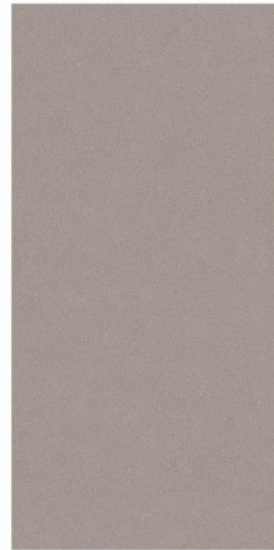




DESERT GINGER

Category : Basic

600x1200mm



Surface : Premium Matt



Surface : Smooth Polished

ORELIA
GROUP



DESERT GESSO

SIZE : 600x1200mm | SURFACE : PREMIUM MATT | CATEGORY : SUPER PLUS

ORELIA
GROUP

SIZE : 600x1200mm | SURFACE : SMOOTH POLISHED | CATEGORY : SUPER PLUS



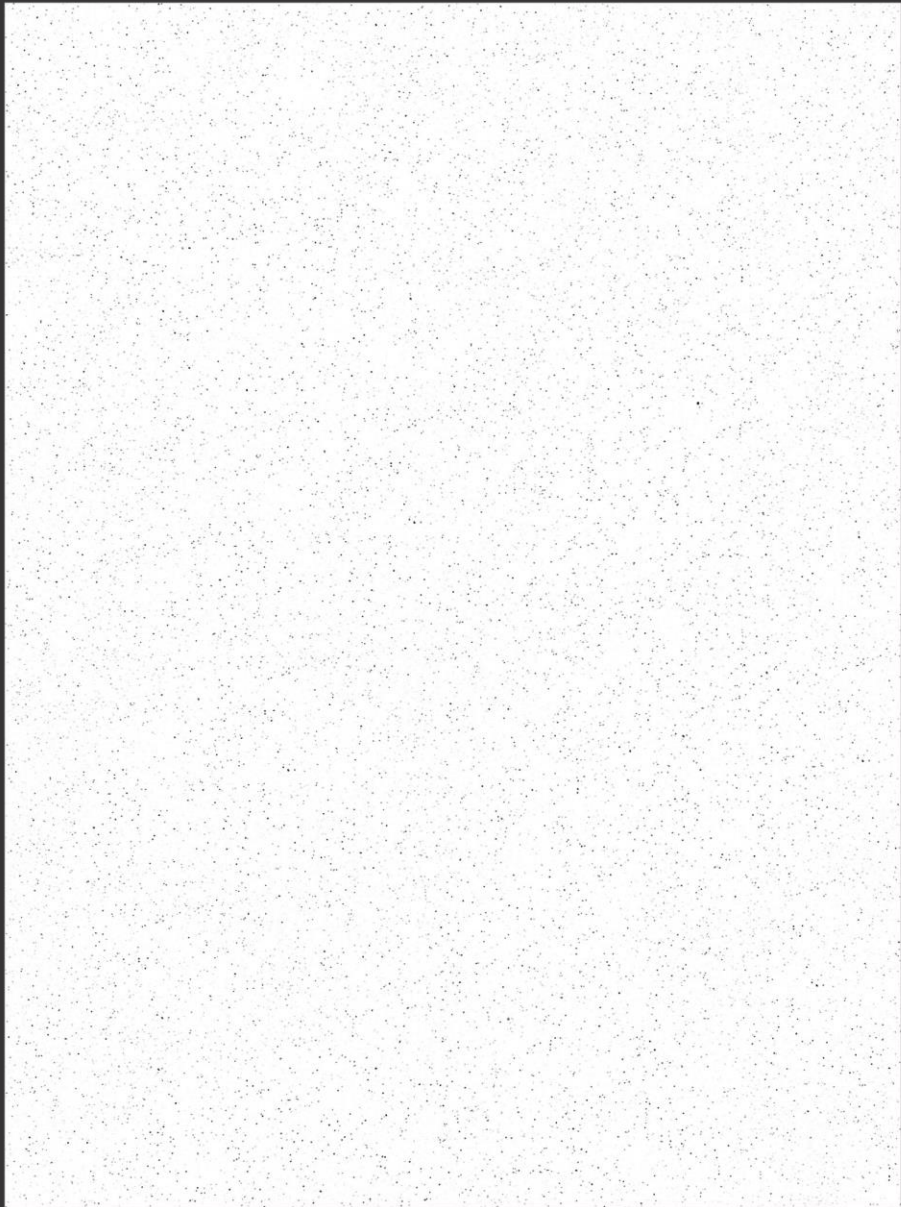
SIZE : 600x600mm | SURFACE : SMOOTH POLISHED | CATEGORY : SUPER PLUS

DESERT GESSO

SIZE : 600x600mm | SURFACE : PREMIUM MATT | CATEGORY : SUPER PLUS

ORELIA
GROUP

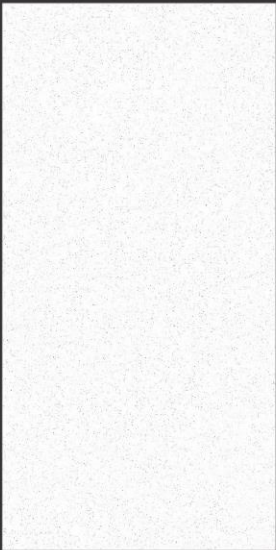




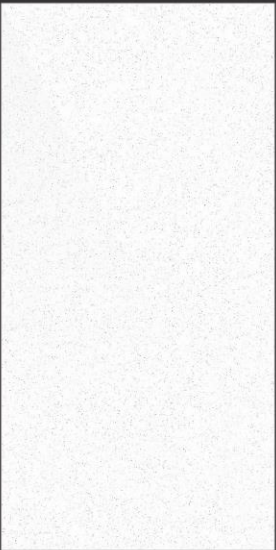
DESERT GESSO

Category : Super Plus

600x1200mm

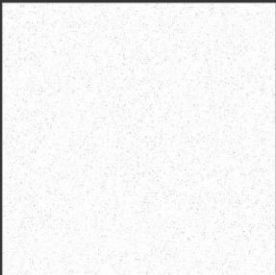


Surface : Premium Matt

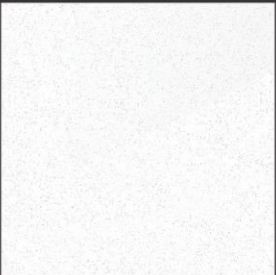


Surface : Smooth Polished

600x600mm



Surface : Premium Matt



Surface : Smooth Polished



DESERT GRANITE

SIZE : 600x1200mm | SURFACE : PREMIUM MATT | CATEGORY : BASIC

ORELIA
GROUP

SIZE : 600x1200mm | SURFACE : SMOOTH POLISHED | CATEGORY : BASIC



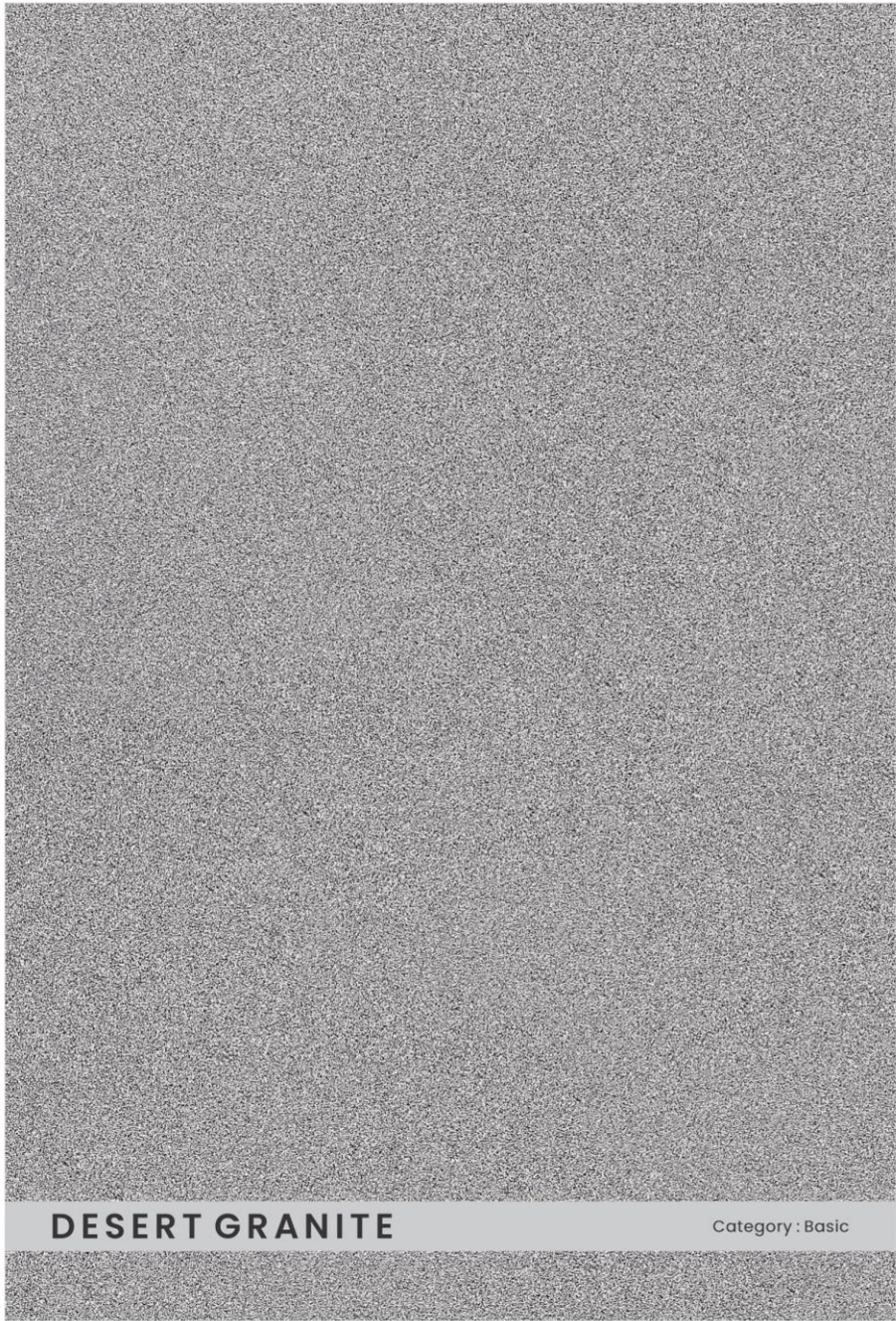
SIZE : 600x600mm | SURFACE : SMOOTH POLISHED | CATEGORY : BASIC

DESERT GRANITE

SIZE : 600x600mm | SURFACE : PREMIUM MATT | CATEGORY : BASIC

ORELIA
GROUP

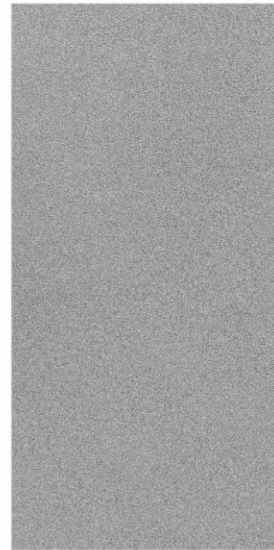




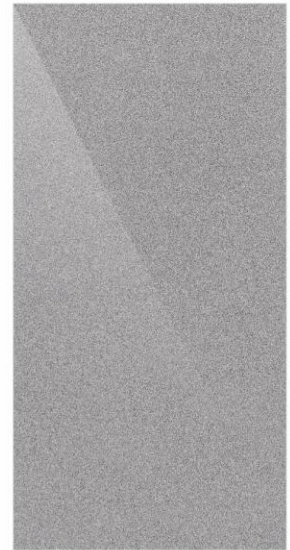
DESERT GRANITE

Category : Basic

600x1200mm

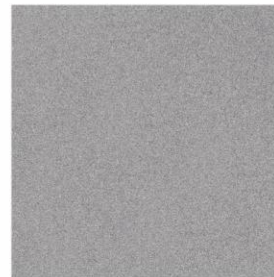


Surface : Premium Matt

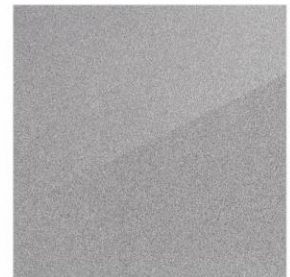


Surface : Smooth Polished

600x600mm



Surface : Premium Matt



Surface : Smooth Polished

ORELIA
GROUP



GET
YOUR
EXCLUSIVE
FULL
BODY
MATERIAL

***On special request.
Casa Tiles can create
fully customised full -
body materials, with
a mix of colours
chosen from
numerous coloured
bodies.***

*Special request required with MOQ. T&C Applied.



DESERT COAL

SIZE : 600x1200mm | SURFACE : PREMIUM MATT | CATEGORY : SUPER PLUS

ORELIA
GROUP

SIZE : 600x1200mm | SURFACE : SMOOTH POLISHED | CATEGORY : SUPER PLUS



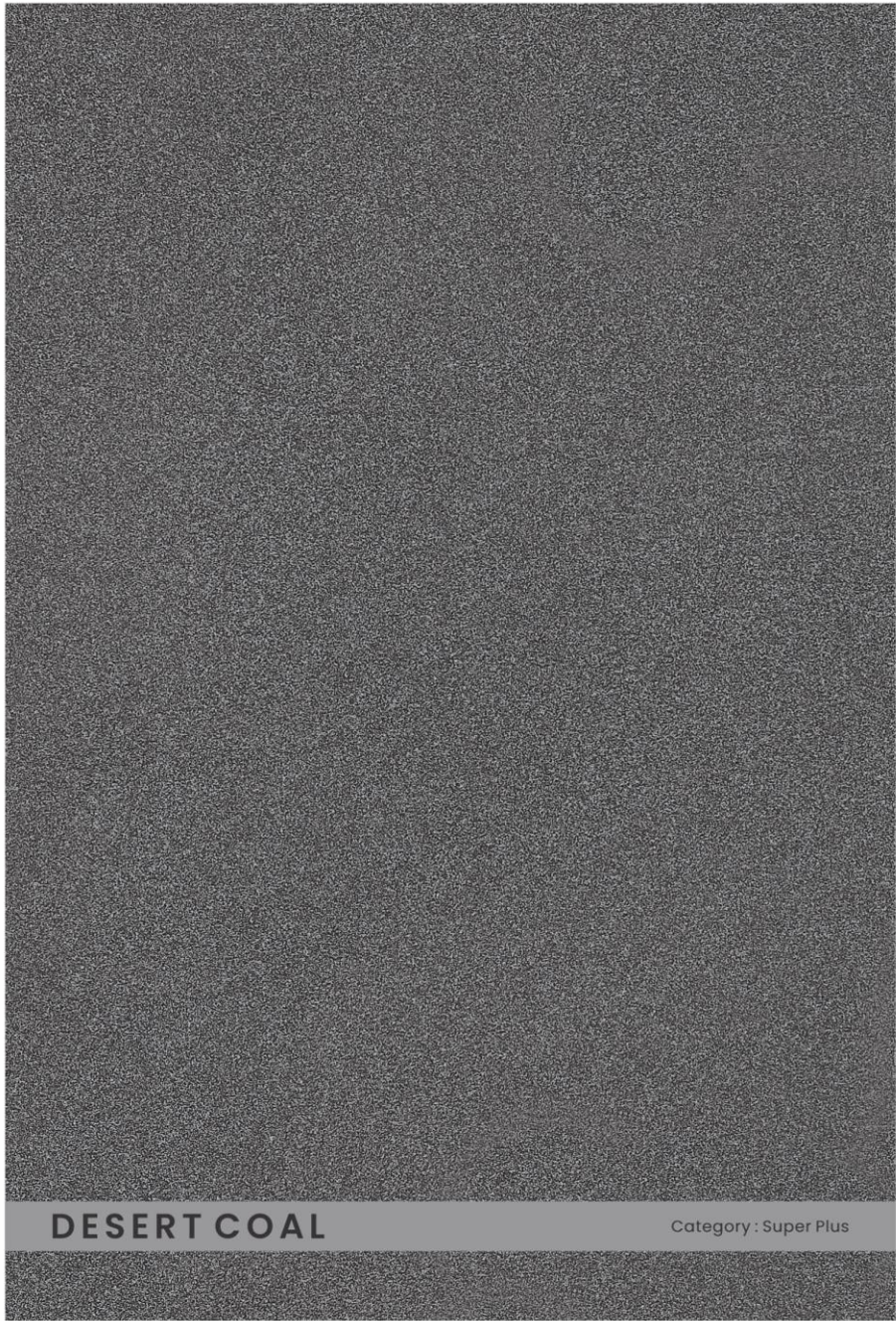
SIZE : 600x600mm | SURFACE : SMOOTH POLISHED | CATEGORY : SUPER PLUS

DESERT COAL

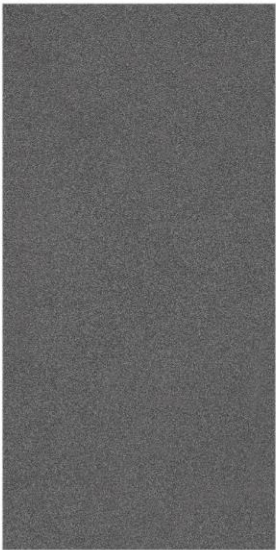
SIZE : 600x600mm | SURFACE : PREMIUM MATT | CATEGORY : SUPER PLUS

ORELIA
GROUP

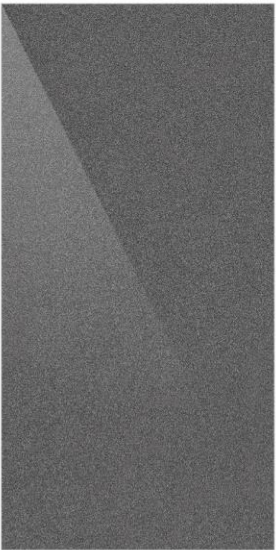




600x1200mm

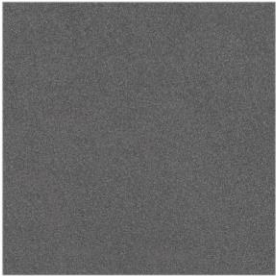


Surface : Premium Matt

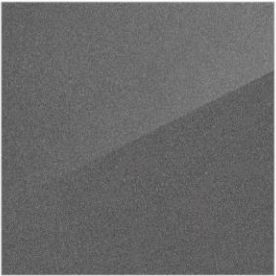


Surface : Smooth Polished

600x600mm



Surface : Premium Matt



Surface : Smooth Polished



DESERT LUX

SIZE : 600x1200mm | SURFACE : PREMIUM MATT | CATEGORY : PLUS

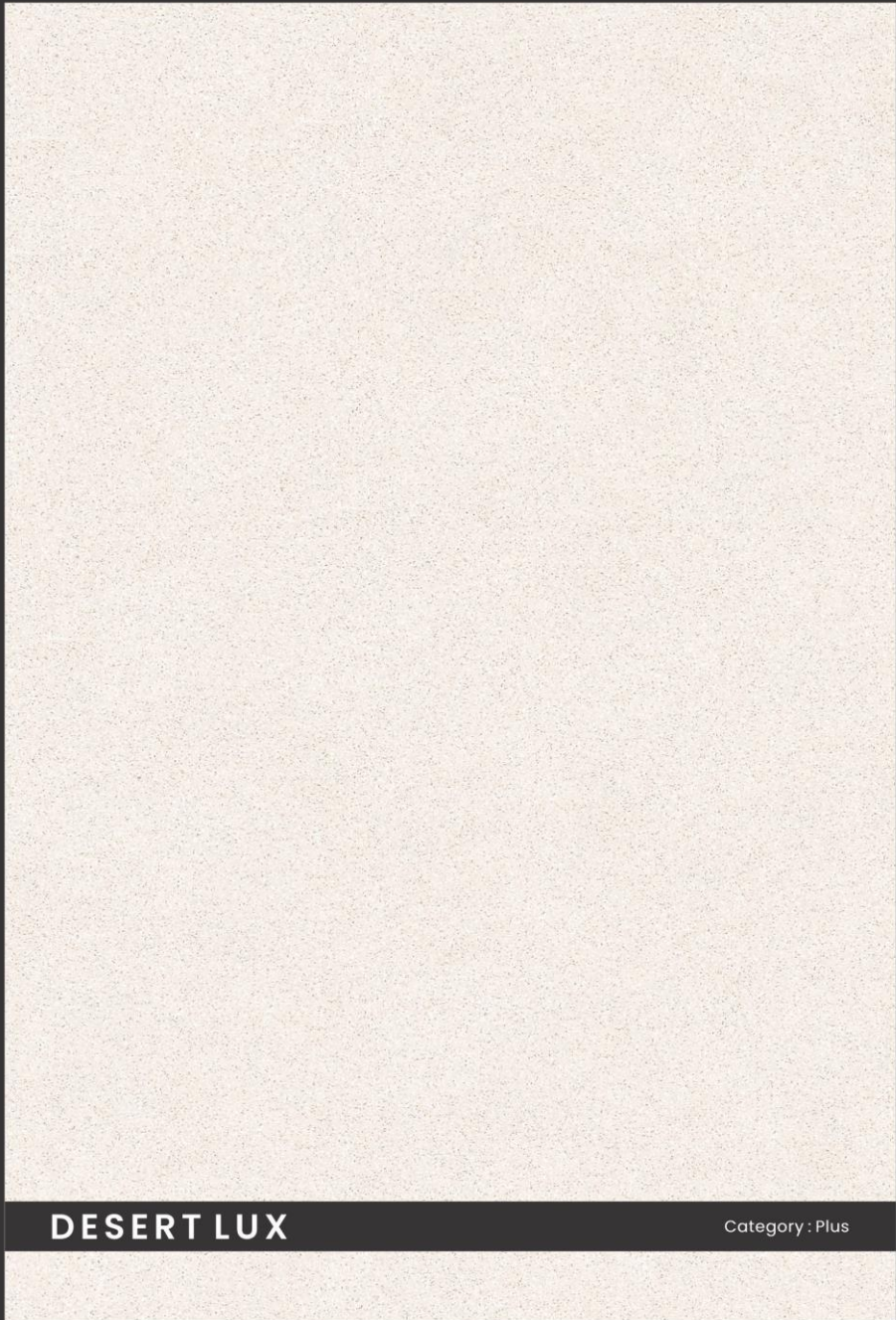
ORELIA
GROUP

DESERT LUX

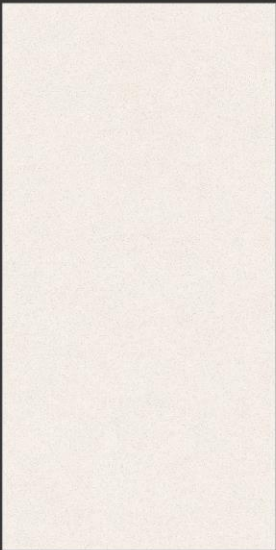
SIZE : 600x1200mm | SURFACE : SMOOTH POLISHED | CATEGORY : PLUS

ORELIA
GROUP





600x1200mm



Surface : Premium Matt



Surface : Smooth Polished



DESERT KOTA

SIZE : 600x1200mm | SURFACE : PREMIUM MATT | CATEGORY : PLUS

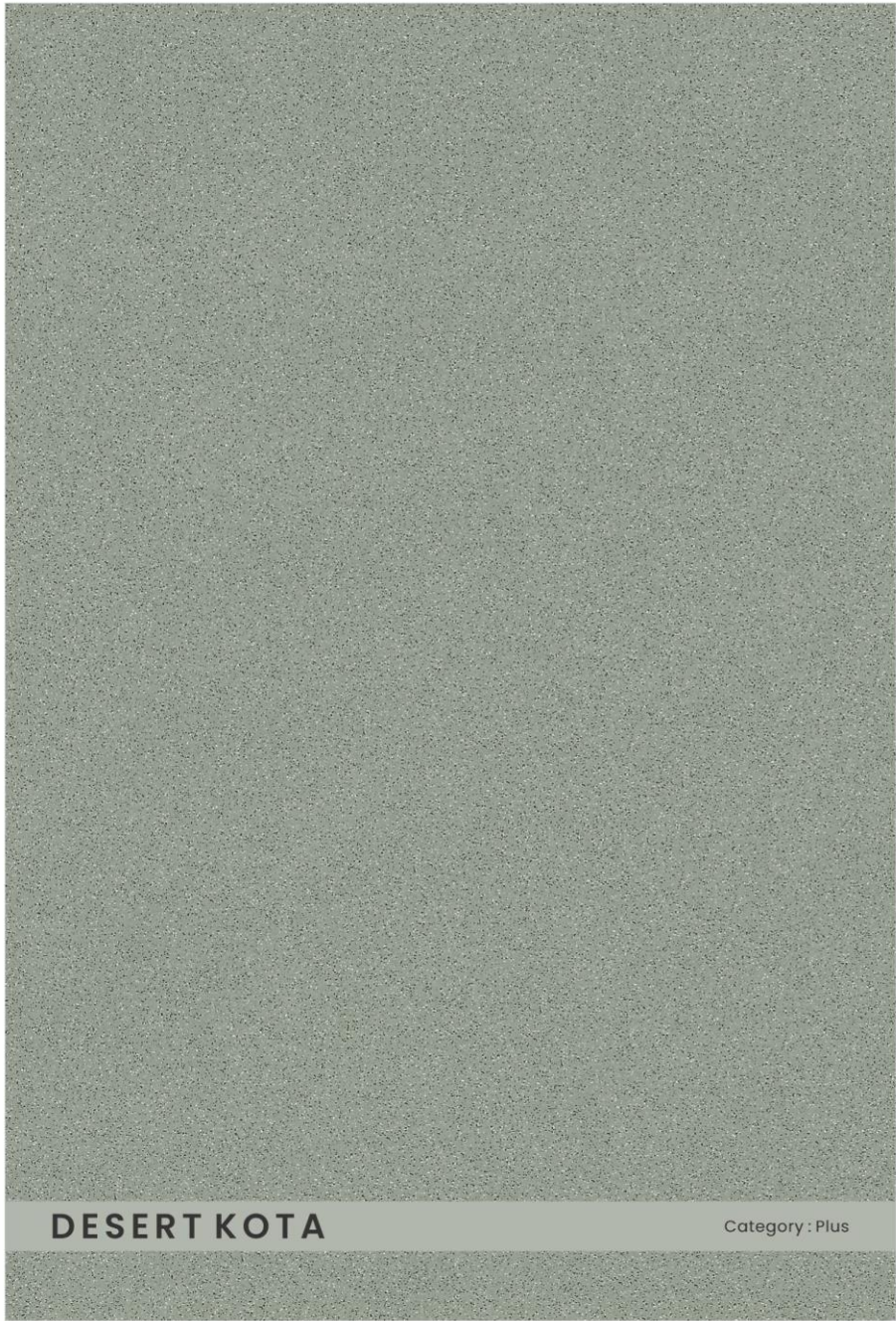
ORELIA
GROUP

DESERT KOTA

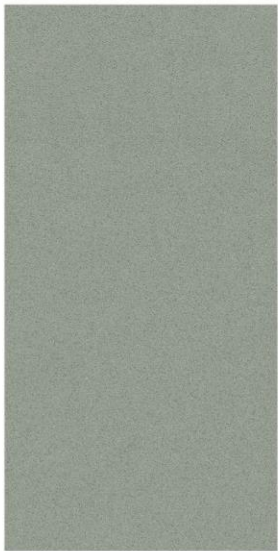
SIZE : 600x1200mm | SURFACE : SMOOTH POLISHED | CATEGORY : PLUS

ORELIA
GROUP

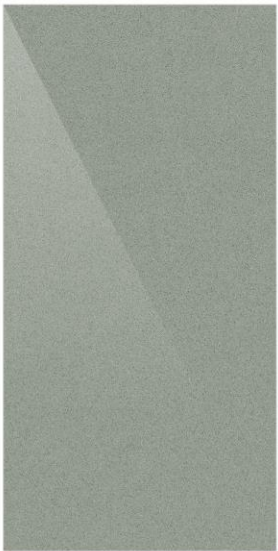




600x1200mm



Surface : Premium Matt



Surface : Smooth Polished



DESERT CEMENTO

SIZE : 600x1200mm | SURFACE : PREMIUM MATT | CATEGORY : BASIC

ORELIA
GROUP

SIZE : 600x1200mm | SURFACE : SMOOTH POLISHED | CATEGORY : BASIC



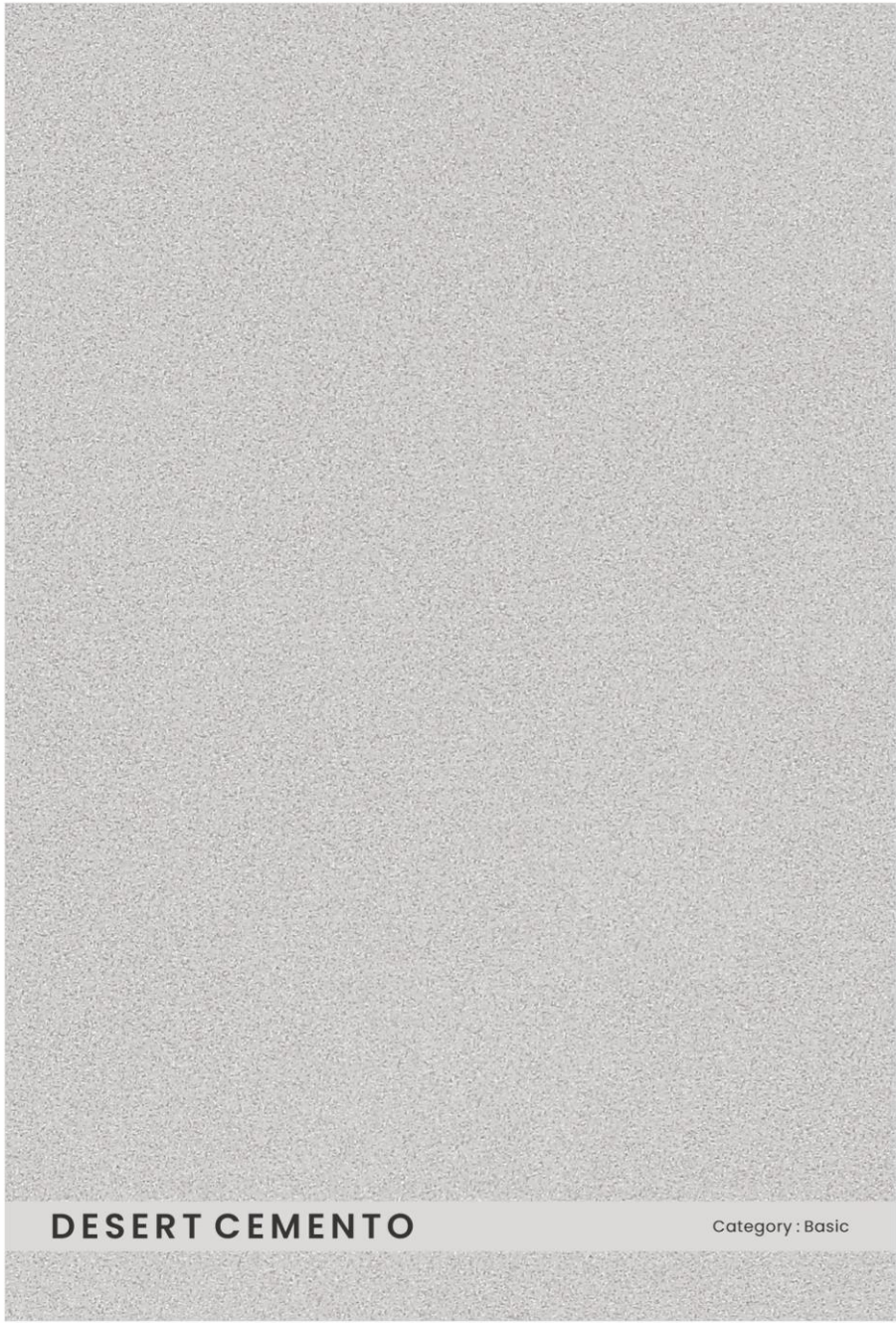
SIZE : 600x600mm | SURFACE : SMOOTH POLISHED | CATEGORY : BASIC

DESERT CEMENTO

SIZE : 600x600mm | SURFACE : PREMIUM MATT | CATEGORY : BASIC

ORELIA
GROUP

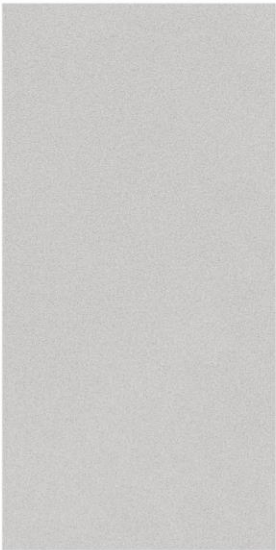




DESERT CEMENTO

Category : Basic

600x1200mm

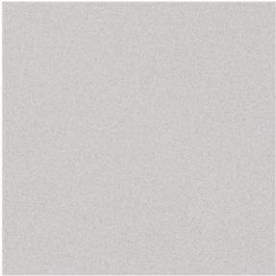


Surface : Premium Matt



Surface : Smooth Polished

600x600mm



Surface : Premium Matt



Surface : Smooth Polished



DESERT TOBACCO

SIZE : 600x1200mm | SURFACE : PREMIUM MATT | CATEGORY : PLUS

ORELIA
GROUP

SIZE : 600x1200mm | SURFACE : SMOOTH POLISHED | CATEGORY : PLUS



SIZE : 600x600mm | SURFACE : SMOOTH POLISHED | CATEGORY : PLUS

DESERT TOBACCO

SIZE : 600x600mm | SURFACE : PREMIUM MATT | CATEGORY : PLUS

ORELIA
GROUP





600x1200mm



Surface : Premium Matt



Surface : Smooth Polished

600x600mm



Surface : Premium Matt



Surface : Smooth Polished



DESERT BEIGE

SIZE : 600x1200mm | SURFACE : PREMIUM MATT | CATEGORY : BASIC

ORELIA
GROUP

SIZE : 600x1200mm | SURFACE : SMOOTH POLISHED | CATEGORY : BASIC



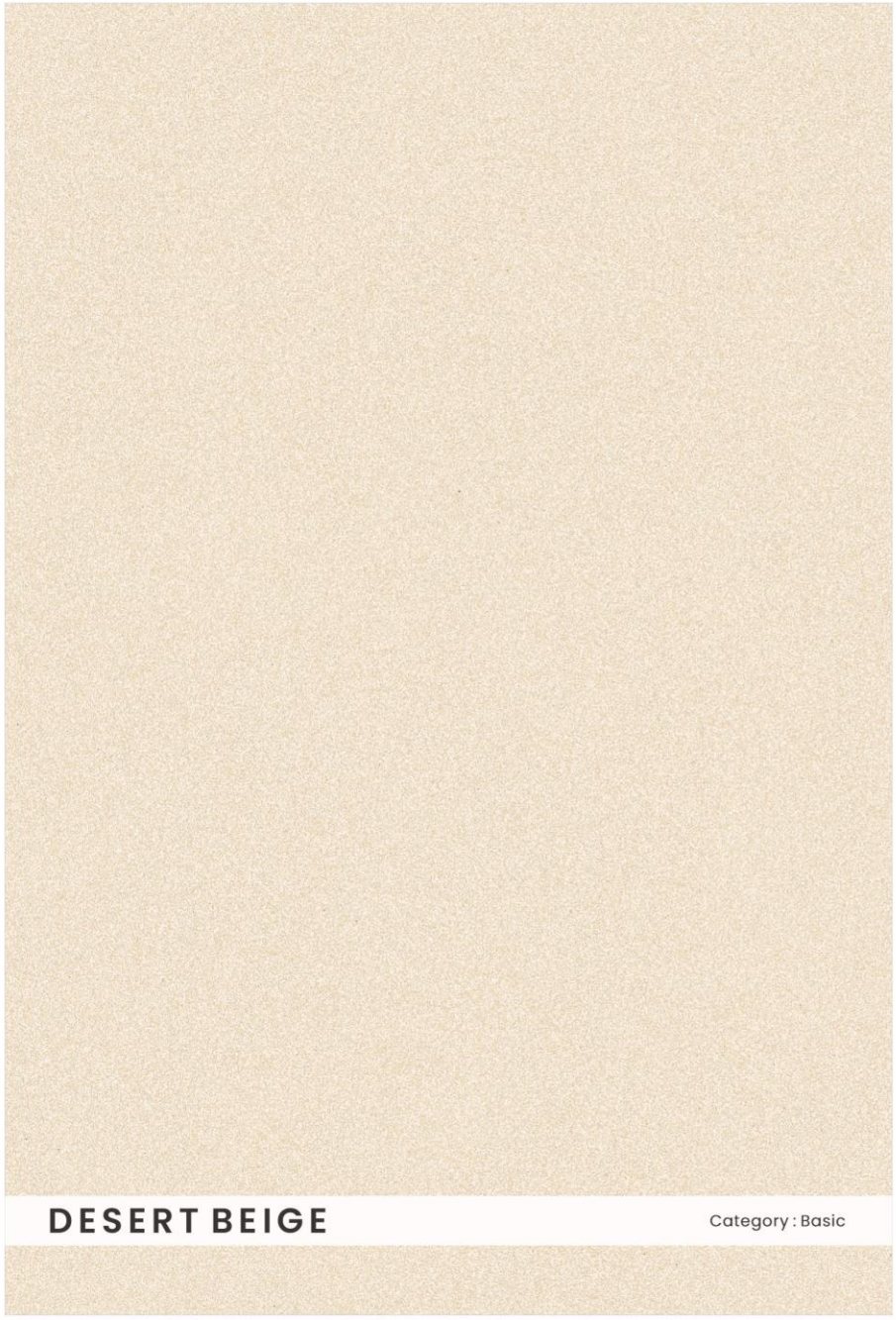
SIZE : 600x600mm | SURFACE : SMOOTH POLISHED | CATEGORY : BASIC

DESERT BEIGE

SIZE : 600x600mm | SURFACE : PREMIUM MATT | CATEGORY : BASIC

ORELIA
GROUP





DESERT BEIGE

Category : Basic

600x1200mm

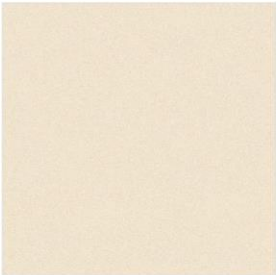


Surface : Premium Matt



Surface : Smooth Polished

600x600mm



Surface : Premium Matt

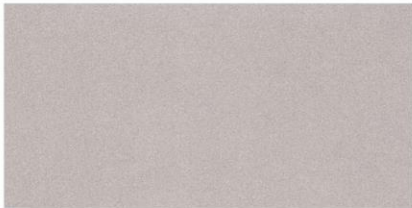


Surface : Smooth Polished

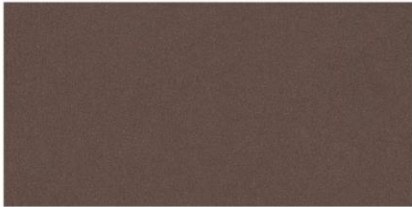
Color Range



Desert Camel



Desert Sahara



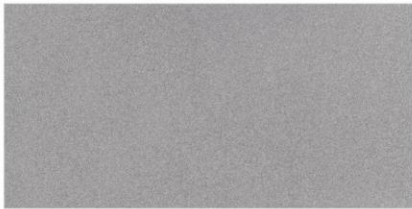
Desert Choco



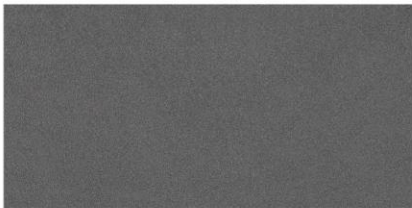
Desert Ginger



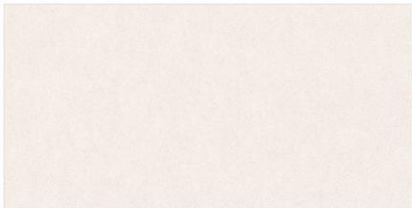
Desert Gesso



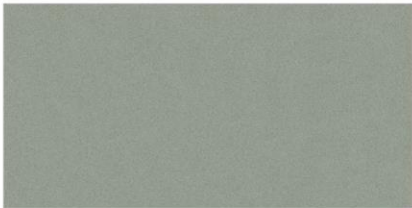
Desert Granite



Desert Coal



Desert Lux



Desert Kota



Desert Cemento



Desert Tobacco



Desert Beige

SIZES :

600x
1200mm

SIZES :

600x
600mm

HOUSE OF **FULL BODY** VITRIFIED TILES.

Color Range	Design Name	Type	Category	600x1200mm		600x600mm	
				Matt	Polished	Matt	Polished
	Desert Sahara	Salt & Pepper	Basic	✓	✓	✓	✓
	Desert Ginger	Salt & Pepper	Basic	✓	✓		
	Desert Granite	Salt & Pepper	Basic	✓	✓	✓	✓
	Desert Beige	Salt & Pepper	Basic	✓	✓	✓	✓
	Desert Cemento	Salt & Pepper	Basic	✓	✓	✓	✓
	Desert Kota	Salt & Pepper	Plus	✓	✓		
	Desert Lux	Salt & Pepper	Plus	✓	✓		
	Desert Camel	Salt & Pepper	Plus	✓	✓		
	Desert Tobacco	Salt & Pepper	Plus	✓	✓	✓	✓
	Desert Coal	Salt & Pepper	Super Plus	✓	✓	✓	✓
	Desert Gesso	Salt & Pepper	Super Plus	✓	✓	✓	✓
	Desert Choco	Salt & Pepper	Super Plus	✓	✓		





Installation System

Certification

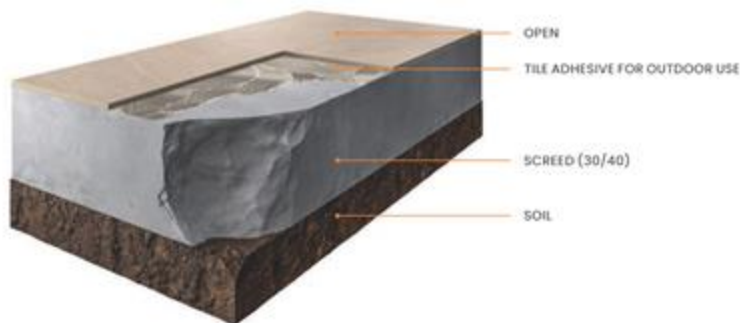
Technical Specification

Tile Cleaning

LAYING ON SCREED



SUGGESTED PROCESS



INSTALLATION SYSTEMS



Clean the existing surface and check that the screed has been properly prepared: flat, dry and cured. Spread the adhesive evenly over the surface.



मौजूदा सतह को साफ करें और जांच लें कि स्क्रिड सही से तैयार किया गया है: सपाट, सूखा और ठीक हो। सतह पे एडहेसिव को समान रूप से फैलाएं।



Put the tiles in place and tap down gently with a rubber hammer to drive out the air and ensure perfect bonding. Fit the 4/5 mm spacers into the joints.



टिले को जगह में रखें और धीरे से एक टबल के हथोड़े से नीचे टैप करें और हवा को बाहर निकाल सही बॉन्डिंग सुनिश्चित करें। जोड़ों में 4 या 5 मिमी स्पेसर फिट करें।



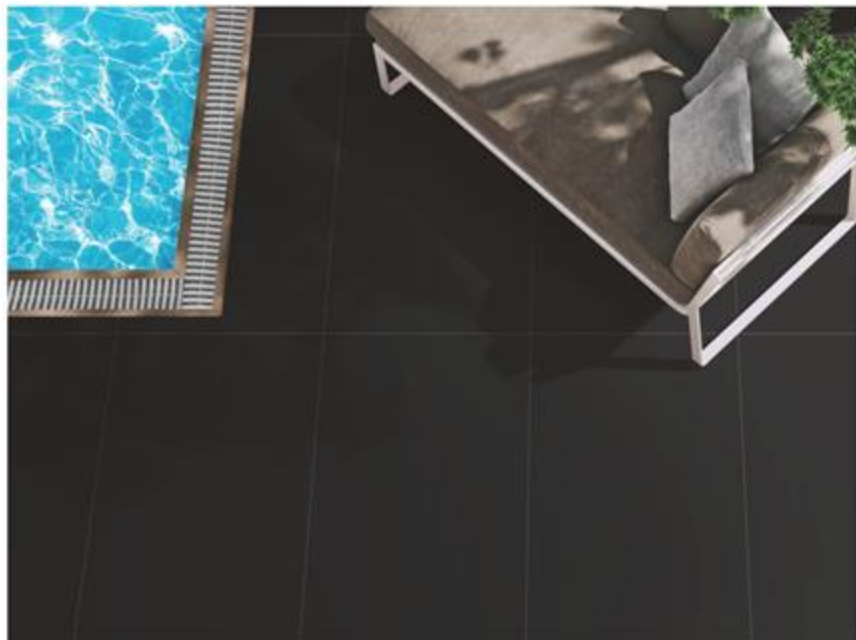
Once the glue has dried, remove the spacers, grout the joints and clean thoroughly to remove any residues.



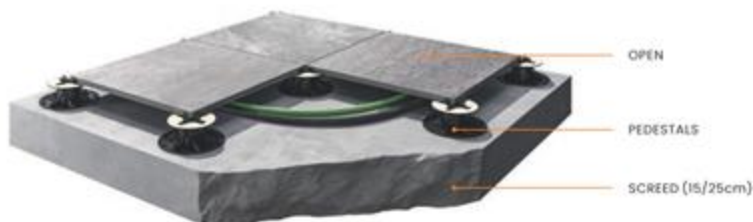
गोंद सूख जाने के बाद, स्पेसर को हटा दें, जोड़ों को ग्राउट करें और उसके कोई अवशेष हटाने के लिए अच्छी तरह से सतह साफ करें।



LAYING ON SCREED



SUGGESTED PROCESS



INSTALLATION SYSTEMS



Clean the existing surface and check that the screed is level to select the right type of pedestal. The screed must be dry and cured. Prepare the chosen pedestals, cutting the ones around the edge to size and removing any unwanted wings.



मौजूदा सतह को साफ करें और जांच लें कि स्क्रिड सही प्रकार के पेडस्टल को चुनने के लिए ठहर पर है। स्क्रिड को सूखा और ठीक किया जाना चाहिए। चुने हुए पेडस्टल को तैयार करें। उन्हें आकार देने के लिए किनारे के चारों ओर काटकर तैयार करें और किसी अवांछित विंग्स को भी हटा दें।



Arrange the grid of pedestals in accordance with the laying diagram, starting with those around the edge. Fit the protective tile edge clips on the pedestals against any walls.

पेडस्टल के ग्रिड को आरेख के अनुसार व्यवस्थित बिछाएं, किनारे के आसपास से शुरू करें। दीवार की तरफ के पेडस्टल पर प्रोटेक्टिव टाइल एज क्लिप्स फिट करें।



Lay the tiles on the pedestals dry. Add a pedestal in the middle of the tiles, removing the spacer wings. Systematically check the flatness and adjust the heights of the pedestals with the adjuster key to compensate for any unevenness in the substrate. A little slope of the substrate is always recommended in order to prevent water stagnation underneath the surface.

पेडस्टल्स पर टाइल को सूखा बिछाएं। टाइल के बीच में एक पेडस्टल जोड़ें, स्पेसर विंग को हटाएं। व्यवस्थित रूप से फ्लैटनेस जांचें और पेडस्टल की ऊंचाई और समतलता की जांच करें। सब्सट्रेट का थोड़ा ढलान हमेशा अनुशंसित है।

LAYING ON SCREED



SUGGESTED PROCESS



INSTALLATION SYSTEMS



Place the slabs dry on the grass and check that the gap between them is the same over the entire laying surface.



हलैव को घास पर सुखा बिछाए और जांचें कि उनके बीच का अंतर पूटी बिछाने की तरह पट समान है।



Mark out the area of turf to be removed and dig out to a depth of at least 5 cm. Create a layer of at least 3 cm of gravel (diam. 3/6 mm).



हटाए जाने वाले टर्फ के क्षेत्र को चिह्नित करें और कम से कम 5 सेमी की गहराई तक खो दें। कम से कम 3 सेमी बजरी की एक परत बनाएं (व्यास 3/6 मिमी)।



After checking that the substrate created is level, put the slabs in place and tap down gently with a rubber hammer to settle them into place and eliminate any unevenness.



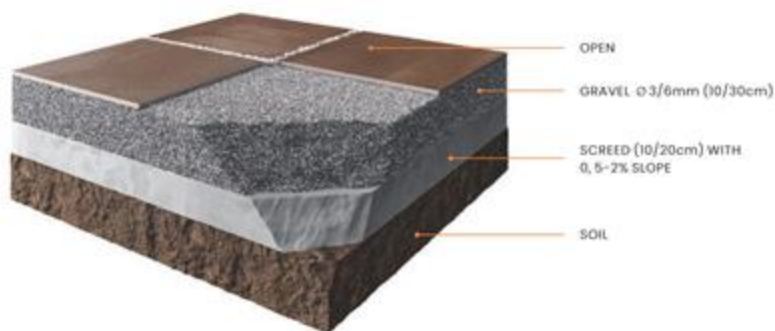
बनाया गया सबस्ट्रेट स्तर होने की जाँच करने के बाद हलैव रखें और एक रबर हथौड़े के साथ उन्हें जगह में व्यवस्थित करने के लिए धीरे से नीचे टैप करें और किसी भी तरह की असमानता को दूर करें।



LAYING ON SCREED



SUGGESTED PROCESS



INSTALLATION SYSTEMS



Create a layer of at least 5 cm of gravel (diam. 3/6 mm) on the existing substrate. Level the surface with a straightedge and check the flatness.



कम से कम 5 सेमी बजरी की परत (डायम 3/6 मिमी) मौजूदा सबस्ट्रेट पर बनाये। सतह को स्ट्रेट एज के साथ लेवल करें और उसकी समतलता की जाँच करें।



Place the slabs dry on the gravel and check that the gap between them is the same over the entire laying surface. Tap down gently with a rubber hammer to settle them into place and eliminate any unevenness.

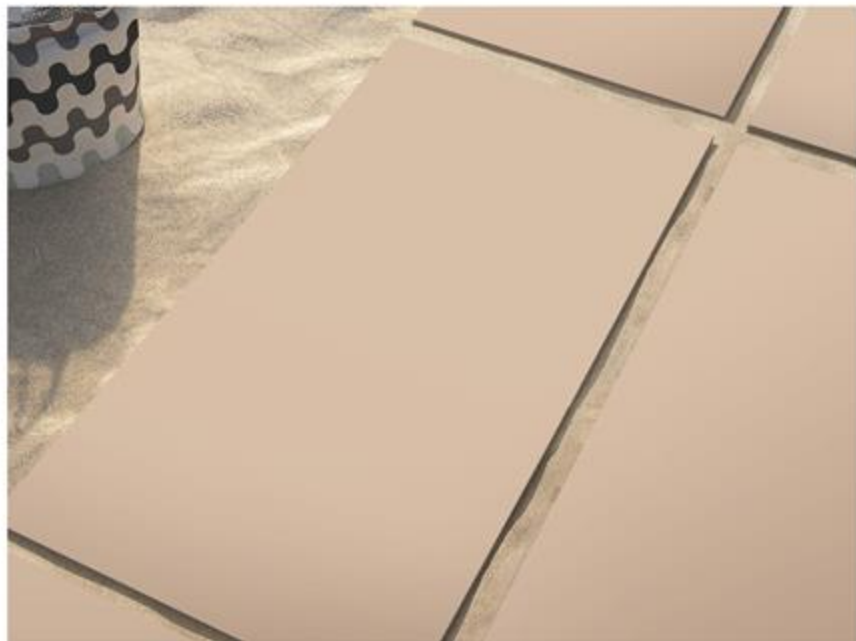
स्लेब को बजरी पर सूखा बिछाए और जाँचें कि उनके बीच का अंतर पूरी बिछाने की सतह पर समान है। उन्हें जगह में बिछाने के लिए रबर के हथोड़े से धीरे से नीचे की ओर टैप करें और किसी भी असमानता को दूर करें।



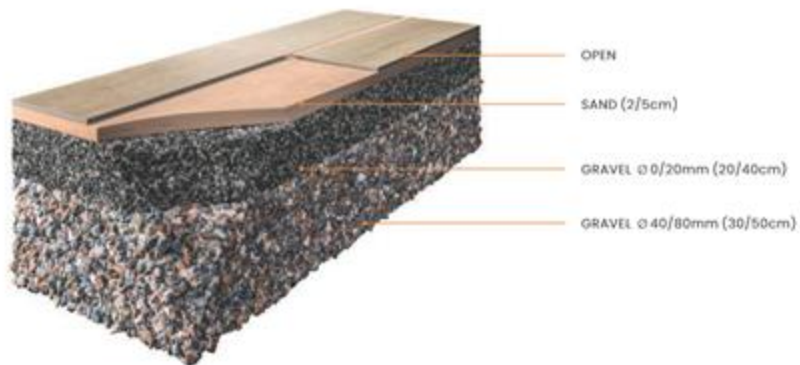
Check the flatness of the surface created. Add gravel in the joints to level the paving. Decorative gravel larger in diameter than the type used for the substrate can also be used in the joints.

बनाई गई सतह की समतलता की जाँच करें। फर्श को समतल करने के लिए जोड़ों में बजरी डालें। सबस्ट्रेट के लिए उपयोग किए जाने वाले प्रकार की तुलना में व्यास में बड़े सजावटी बजरी का उपयोग जोड़ों में भी किया जा सकता है।

LAYING ON SCREED



SUGGESTED PROCESS



INSTALLATION SYSTEMS



Prepare a layer of sand at least 5 cm thick on the existing substrate (screed or gravel). Level the surface with a straightedge and check the flatness.



कम से कम 5 सेमी मोटी रेत की परत मौजूदा सबस्ट्रेट (स्क्रीड या बजरी) पर तैयार करें। सतह को स्ट्रेट एज के साथ लेवल करें और उसकी समतलता की जाँच करें।



Place the slabs dry on the sand and check that the gap between them is the same over the entire laying surface. Tap down gently with a rubber hammer to settle them into place.



स्लेब को रेत पर सूखा बिछाए और जाँचें कि उनके बीच का अंतर पूरी बिछाने की सतह पर समान है। उन्हें जगह में बिछाने के लिए रबर के हथोड़े से धीरे से नीचे की ओर टैप करें और किसी भी असमानता को दूर करें।



Add sand in the joints to level the paving. Clean the surface of the slabs.



फर्श को समतल करने के लिए जॉइंट्स में रेत डालें। स्लेब की सतह को साफ करें।

OUR NAME STANDS FOR TECHNICAL AND AESTHETIC EXCELLENCE.



Around the world, we proudly promote materials that best express that Made in India aesthetic, style and technical excellence.

On the international market, our name is synonymous with Full body tiles technical porcelain stoneware that offers extremely high technical and aesthetic performance. We transform top quality raw materials into ceramic projects able to interpret the many requirements of a continuously evolving world.



TILES OF INDIA

Tiles of India is the certified brand of origin which exclusively marks all products fully manufactured in India representing the decades old values system of the Indian Ceramic Industry. We support all those values promoted by the Indian Ceramics code of ethics, from **100% Indian production to social and environmental responsibility.**



100% ISO 9001:2015 certification is internationally recognised and represents a guarantee of the excellence and quality of the management system. CASA TILES decided of its own accord to undertake this important process, adopting a set of rules, responsibilities and checks to improve the efficiency of processes and customer satisfaction, to boost its competitiveness and maintain compliance with the highest quality standards.



SAFETY SYSTEM MANAGEMENT

The health and wellbeing of employees are crucial priorities for CASA TILES. the attainment of ISO 45001 certification strengthens a business culture that sees safety not simply as a question of regulatory compliance, but as an essential part of working processes. Regulation is a necessary tool for generating a new model of sustainable competitiveness that can improve company performance across the board.

ECO-SUSTAINABLE DEVELOPMENT



ENVIRONMENTAL MANAGEMENT

CASA TILES conforms with the environmental regulations envisaged by the ISO 14001 certification. This certification measures and controls the reduced environmental impact of production sites, through an environmental management system based on strict parameters.

Casa Tiles CONTRIBUTES TOWARDS ENERGY EFFICIENCY THROUGH:

- 100% recycling of waters used
- 100% recycling of unfired and fired waste
- 100% recycling of packaging and pallets
- 60% recycling of waste.

LOW ATMOSPHERIC GAS EMISSIONS

- 100% Water Consumption Savings
- 100% Recycling of Unfired Waste
- 100% Recycling of Fired Waste
- 100% Recycled Packaging
- 70% Recycling of Industrial Waste
- Noise Pollution Monitoring
- 100% Recycled Pallets



LOW ATMOSPHERIC GAS EMISSIONS



100% WATER CONSUMPTION SAVINGS



100% RECYCLING OF UNFIRED WASTE



100% RECYCLING FIRED WASTE



100% RECYCLED PACKAGING



90% RECYCLING OF INDUSTRIAL WASTE



NOISE POLLUTION MONITORING



100% RECYCLED PALLETES



IMC is a voluntary certification system, for the design, construction and management of high performance sustainable buildings; it promotes an integrated design system that concerns the whole building. It is developed by the U.S. INTERNATIONAL MANAGEMENT COUNCIL (USIMC), an association which provides a global approach to sustainability, providing recognition for virtuous performance levels in key areas of human and environmental health. The system is based on rating credits for each of the requisites featuring the sustainability of the building. The sum of the credits composes the certification level achieved.

TECHNICAL SPECIFICATION

TECHNICAL DETAILS	STANDARD AS PER ISO-13006/EN176 GROUP B1a	MEAN VALUE OF CASA FULL BODY VITRIFIED TILES	METHOD OF TEST
Deviation In Length & Width	± 0.60%	± 0.10%	ISO-10545-2
Deviation In Thickness	± 5.00%	± 2.00%	ISO-10545-2
Straightness Of Sides	± 0.50%	± 0.10%	ISO-10545-2
Rectangularity	± 0.60%	± 0.10%	ISO-10545-2
Surface Flatness	± 0.50%	± 0.10%	ISO-10545-2
Glossiness	Gloss Meter	Min. 90%	Glossometer
Water Absorption	≤ 0.50%	E ≤ 0.05%	ISO-10545-3
Breaking Strength	1300 N	2000 N	ISO-10545-4
Abrasion Resistance	Max. 175mm	Max. 145mm3	ISO-10545-6
Moh's Hardness	Min. 6	≤ 6*	EN101
Frost Resistance	Frost Proof	Frost Proof	ISO-10545-12
Thermal Shock	No Damage	No Damage	ISO-10545-9
Moisture Expansion	Nil	Nil	ISO-10545-10
Thermal Expansion	< 9 x 10 ⁻⁶	< 6 x 10 ⁻⁶	ISO-10545-8
Resistance of House Hold Chemical	No Damage	No Damage*	ISO-10545-13
Stain Resistance	Resistance	Resistance*	ISO-10545-14
Slip Resistance (Friction Co Efficient)	> 0.40	> 0.40	ISO-10545-17

PACKING DETAILS

Collection	Size	Pieces / Box	Whight / box (approx)	Coverage Area / Box
Casa Desert	600x1200mm	2 Pieces	29.00kg	15.5 ft ² or 1.44 mtr ²
	600x600mm	4 Pieces	28.00kg	15.5 ft ² or 1.44 mtr ²

Disclaimer

Casa reserves the right to delete & amend either totally or partially, any of the colours, shapes, sizes, references and other technical specifications contained in this catalogue at anytime. The colours of tiles shown in this catalogue are purely illustrative to printing process. Please refer actual sample before final selection. The details of sizes, colours and references should be verified for typographical errors.

CLEANING & MAINTENANCE

TYPE OF STAIN	CHEMICAL PRODUCT	EXAMPLE
Grease	Alkaline - Solvent	Detergent
Oil	Solvent	Ammonia, Backing Soda
Ink	Oxidant - Solvent	Alcohol, Liquid Bleach, Nail Paint Remover
Rust	Acid	Hydrochloric Acid, Vinegar, Red Harpic
Lime	Acid	Descaling Reagent, Hydrochloric Acid
Cement	Acid	Hydrochloric Acid
Wine	Alkaline	Ammonia, Liquid Bleach
Coffee	Alkaline - Solvent	Ammonia, Liquid Bleach
Rubber	Solvent	Alcohol, Thinner
Plaster	Acid	Hydrochloric Acid
Candle Wax	Solvent	Alcohol, Thinner
Iodine	Oxidant	Liquid Bleach
Blood	Oxidant	Liquid Bleach
Ice Cream	Alkaline	Liquid Bleach

Our products are non porous (due to their high quality raw materials, stringent production parameters and state of the art technology), hence any dust or deposited waste cannot penetrate the surface. For most cases only a damp cloth is sufficient for cleaning. Regular cleaning highlights the aesthetic features of the surface and gives it exceptional shine. For highly aggressive cleaning caused by some common food and substances follow the table below.



Head Office: 86/2, Lower Ground Floor, Government College Rd, Civil Lines,
Ludhiana, Punjab 141001, India

Mr. Vishal Sharma
(International Export Manager)

M: +91 9915406626

Email : ib@orelia.co.in

ORELIA
GROUP